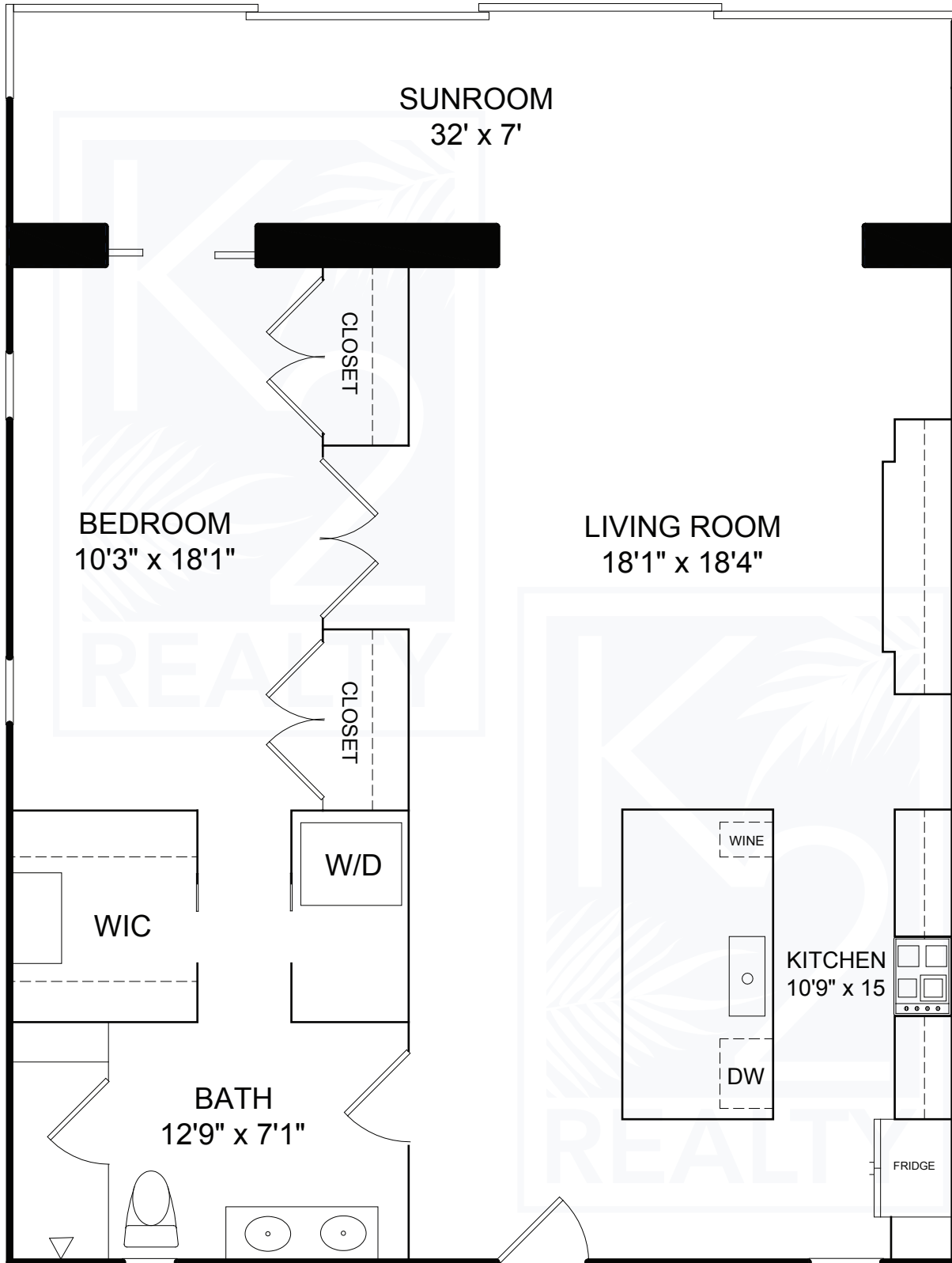


# 3 CHURCH LANE, 135-136



Notice: This rendering is for marketing purposes only.  
All measurements, features and specifications are approximate.  
The accuracy of this information is subject to errors, omissions and changes.  
An architect should be contacted for actual measurements, features and specifications.

## Area Calculations

Total Area: 1,200 Sq. Ft.



PAUL KANEB  
JAMES KENNY  
JOHN LUEKING  
11676 US HIGHWAY 1  
NORTH PALM BEACH, FL 33408  
OFFICE: 561-691-1223  
WWW.K2-REALTY.COM